

Northeast Knee AND Joint Institute

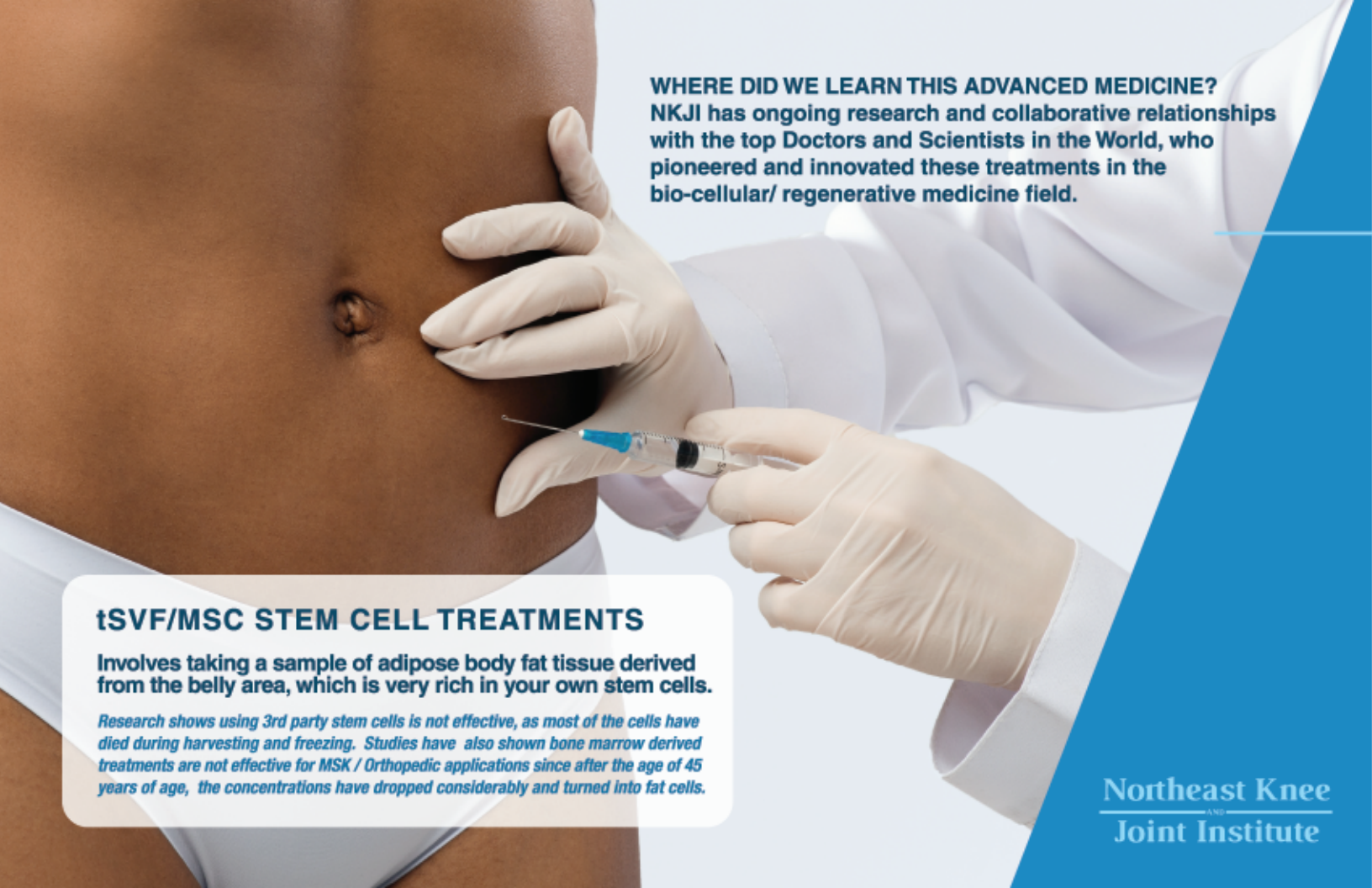


The Future
of Medicine

The Most Advanced Bio-Cellular
Autologous Adipose Tissue-Derived
**STROMAL & MESENCHYMAL
STEM CELLS WITH
PLATELET RICH PLASMA CONCENTRATE**



**FOR THE TREATMENT OF
OSTEOARTHRITIS, PAIN,
& SOFT TISSUE DAMAGE
OF THE KNEE, HIP, SHOULDER AND SPINE**



WHERE DID WE LEARN THIS ADVANCED MEDICINE?
NKJI has ongoing research and collaborative relationships with the top Doctors and Scientists in the World, who pioneered and innovated these treatments in the bio-cellular/ regenerative medicine field.

tSVF/MSC STEM CELL TREATMENTS

Involves taking a sample of adipose body fat tissue derived from the belly area, which is very rich in your own stem cells.

Research shows using 3rd party stem cells is not effective, as most of the cells have died during harvesting and freezing. Studies have also shown bone marrow derived treatments are not effective for MSK / Orthopedic applications since after the age of 45 years of age, the concentrations have dropped considerably and turned into fat cells.

**Northeast Knee
Joint Institute**

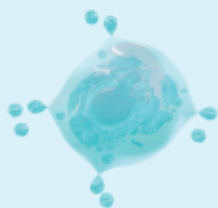
A Brief Summary of our tSVF/MSC Stem Cell Treatments

Stem cells must be alive to work, the fat tissue around a person's belly is very rich in the body's best form of stem cells (Mesenchymal and Stromal), they are very much alive and programmed to you! *MSC Stem Cells can differentiate into a variety of cell types!

- **This tissue is then micronized, and stromal / mesenchymal stem cells are concentrated with nano micronized fat cells.**
- **At the same time PRP is then drawn from the patient's blood and added to the micronized fat and stem cell mixture.**
- **We then have a very potent mixture of micronized fat for initial lubrication, Mesenchymal and Stromal Stem Cells for regeneration and healing, and PRP for further growth and triggering factors.**
- **Over time the micronized fat cells break down and then act as an energy source and substrate for your stem cells to live longer and continue their "remodeling/ regeneration" of the treated areas.**
- **In most cases one treatment will "turn the clock back" many years and offer relief for a considerable amount of time, possibly permanently.**
- **Studies have shown It's ability to remodel up 3-6 mm of cartilage and soft tissue in an affected joint.**

ENHANCE YOUR STEM CELL TREATMENT

We believe we are offering the most advanced stem cell treatment in the world by adding billions of growth factors and healing factors called exosomes and allograft derived from UV sterilized amniotic fluid / membrane.



rexo

INNOVATIVE REGENERATIVE MEDICINE

Rexo is an innovative extracellular vesicle product that offers advanced healing properties. Extracellular vesicles are found in all bodily fluids and are primarily used in cell signaling. They contain nearly three times more growth factors than adult stem cells and influence the growth of target cells. They are a vital regenerative component due to their unique ability to transfer information from cell to cell.





IN ADDITION
TO UTILIZING YOUR
OWN STEM CELLS,
YOUR OWN PLATELET
RICH PLASMA IS
USED (PRP).

OUR HIGH CONCENTRATE 20 BILLION+ PRP IS VERY RICH IN A2M

Alpha 2 Macroglobulin (A2M) injections are a cutting-edge new treatment for osteoarthritis and other painful orthopedic conditions. A2M is a human plasma protein molecule that occurs naturally in your bloodstream and when injected into the osteoarthritic or painful area, begins to promote healing. The procedure is minimally-invasive, and not painful. Most patients tell us they feel an improvement in symptoms and mobility on the very same day. The anti-inflammatory effects may last for several months, depending on your circumstances. Early, regular treatments can relieve pain, promote tissue growth, and slow or stop the progression of joint degeneration. It can even prevent or limit the onset of post-traumatic osteoarthritis.





AFTER STEM CELL TREATMENT PREPARATION

We then have a very potent mixture of micronized fat for Initial Lubrication & Scaffolding Matrix Support, Mesenchymal and Stromal Stem Cells for regeneration and healing, and PRP for further Growth and Triggering Factors.

***MSC/Stromal Stem Cells can differentiate into a variety of cell types, including: Bone Cells, Cartilage Cells and Soft Tissue Cells.**

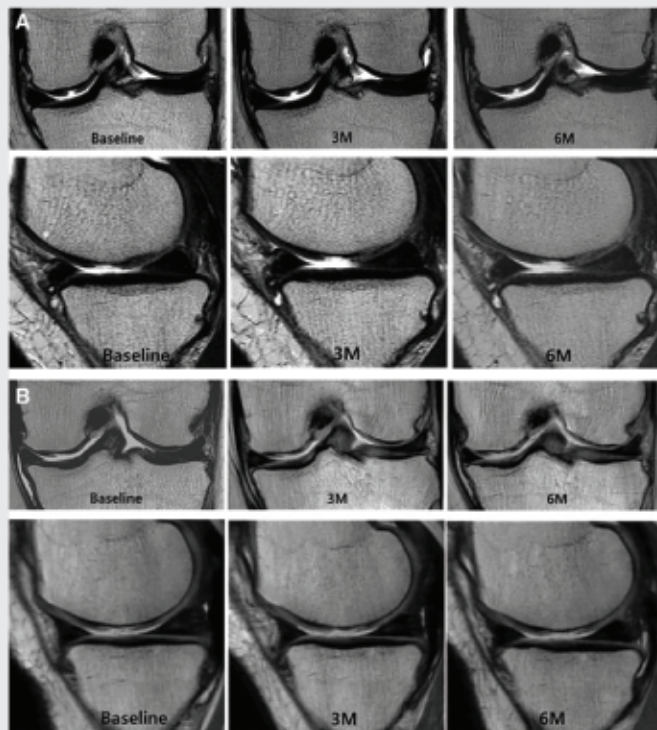
FDA disclaimer

The use of stem cell treatments are not FDA approved. Even though these treatments are investigational, highly promising and significant results have been documented on a regular basis. Because randomized, double-blind studies have not been completed by FDA, stem cell treatments should be considered investigational.



Studies have shown tSVF treatments are capable of

**REMODELING UP TO 3-6 MM OF
CARTILAGE & SOFT TISSUE**



Northeast Knee
AND
Joint Institute



Northeast Knee AND Joint Institute

In order to offer this effective treatment we have extensively reviewed the current research and have on-going relationships with some of the top regenerative medicine doctors and organizations around the world.

At Northeast Knee and Joint we offer a full protocol in order to achieve the most beneficial results from treatment, including OA unloading knee bracing which opens the joint capsule to receive the regenerative healing in the needed areas.

It is our belief that here at Northeast Knee and Joint Institute we are one of only a handful of clinics in the country now offering the most advanced and effective regenerative medicine Stem Cell and PRP treatments in the world, at a very consumer friendly, affordable price-point.

We invite you to do your research and compare!

Please do not hesitate to call with any questions at any time.

Acharya C, Adesida A, Zajac P et al. Enhanced chondrocyte proliferation and mesenchymal stromal cells chondrogenesis in coculture pellets mediate improved cartilage formation. J Cell Physiol 2012;227:88-97.

Studies published in: STEM CELLS TRANSLATIONAL MEDICINE 2019;8:504-511

Northeast Knee AND Joint Institute

3832 MEMORIAL HWY
DALLAS, PA 18612

460 RIVER AVE
WILLIAMSPORT PA 17701

570•213•5221

admin@nkjinstitute.com